



The Transmitter

Suburban RC Barnstormers - P.O. Box 524, Bloomingdale, IL 60108

AMA CHAPTER 640

IMAA CHAPTER 194

February 2013

<http://www.suburbanrcbarnstormers.com>

Coming in February and March

February 18th, Club Meeting, Bloomingdale Public Library, 7:00pm, **NEW DATE – 1 Wk Later Than Usual**
February 21st, Dome Fun Fly, White Pines Golf Dome, 11:00pm, **NEW DATE – 1 Wk Later Than Usual**
February 25th, Board Meeting, Bloomingdale Public Library, 7:00pm

March 11th, Member Meeting, Bloomingdale Public Library, 7:00pm, Club Meeting Room A Only
March 14th, Dome Fun Fly, White Pines Golf Dome, 11:00pm
March 25th, Board Meeting, Bloomingdale Public Library, 7:00pm
March 29th, Swap Shop Setup (Friday), 4:00pm (time to be confirmed)
March 30th, Swap Shop, Dupage County Fairgrounds, 8:00am – 12:00pm

President's Corner

By Mike Maciejewski

Hello to all,

If you were at last month's meeting you would have gotten answers to your questions on the new flying field at Pratt Wayne Forest Preserve. Jessica Ortega and the others with her gave us a good presentation on what they know up to this point. They are hoping to have the new field open in the summer of 2014.

There are still some permits that the county has to approve for the construction, but they don't see any problems at this time. The shelter will cost \$100,000 to build so it is being left out till funds are available to build it. So if you are a member that lives in DuPage County, lobby your representative for the funds.

The question about canopies at the field was brought up as to why we are limited to 200sq feet. Senior Ranger Mark Spencer was there to answer that question. It was asked if we don't have a shelter why we can't have more than 200sq feet. He said he would check into it for us. Mark has gotten back to me on this after a

couple of e-mail back and forth on the rule. The county will not budge on this because a shelter is coming in the future. If we have a permit for the field, we are limited to 200sq feet without having to pay a fee for a larger tent. If it is a non-permit day at the field we can bring as many canopies as we want as long as it does not look like a tent city. How many is that, we will have to find out.

I would like to thank Marty for adding a section to our web page for events of other clubs. This is to let you know of other events going on that you may be interested in.

Swap 'Til You Drop is a month and a half away. We will be asking for volunteers to help. The event is March 30th with setup on the 29th.

Don't forget the next meeting is a week later on February 18th.

Mike

Notes of the Suburban RC Barnstormers Membership Meeting

January 14, 2013

ATTENDANCE

There were 41 members present. Several representatives from the Forest Preserve were present along with new members John Glagola and Bob Vance.

OFFICER REPORTS

President: Mike Maciejewski presided over the meeting.

Mike said the New Years day turnout was great and the weather was better than last year. But it is the New Year so don't forget your 2013 permit.

Mike passed along word from Debbie Howe that we received a letter of thanks from the Bloomingdale Wish Tree for our donations. Many thanks to Deb and our contributing member!

Vice President:

Steve Thill said this months door prizes included a set of snow skis and some wood glue. Steve had a .40 size Cub for our rollover raffle.

Treasurer: Bob Elsner said it was budget time and the members needed to review and approve our budget for 2013. The floor was opened up for questions on the published budget, then a motion was made to pass the budget, seconded, and finalized by a vote of acceptance.

The February meeting will need to be move back a week to February 18th instead of the 11th.

Secretary: Scott Taylor had a list of member emails to pass around with the sign in sheet. He asked members to review the list to make sure their addresses were correct and update them if not.

COMMITTEE REPORTS

Dome Flying – Marty Schrader reported on events at the dome. He said participation has been lighter this year in part due to some incorrect advertising. He is still looking for another volunteer to help manage the dome events. We may need to cancel Thursday nights if we can't get some more help.

Outdoor Fun Flys – Steve Merrill asked members for their opinion about how to spend the fun fly

budget money. When it came to door prizes versus food, the food was the winner. Also, there were some suggestions about either medals or ribbons. Steve said he would look into these.

ENTERTAINMENT

Flying Field Update – Jessica Ortega from the Dupage Forest Preserve District gave a presentation on the progress in moving the flying field from the east side of Pratt's Wayne to a location at the corner of Sterns and Powis roads. Most of the plans previously presented remained the same. But one notable change was deferring the installation of a shelter. The type of shelter planned by the Forest Preserve is very different



from the type at Springbrook. They have plans for a substantial stone structure that is estimated to cost around \$100,000. For this reason, it could not be built within the

current construction budget. It is currently expected the field will open for flying in mid-2014

PLANES

Ron Hilger showed the members his 78" wingspan Miss Erin. His kit built plane was powered by an electric motor running on 4 cells. But was surrounded by a very realistic looking Williams Brothers radial engine shell.

Mary Schrader showed members a couple of delta winged foam flyers. These are powered by 3 cell batteries and are fast. Probably too fast for the dome he says!

Steve Merrill showed members some Fortitude brand tanks made for gasoline that were great for model planes.

RAFFLES

Marty Schrader was the first turkey winner of the year. **Bob Vance** went home with the skis, and **Ed Jorgensen** took home the wood glue.

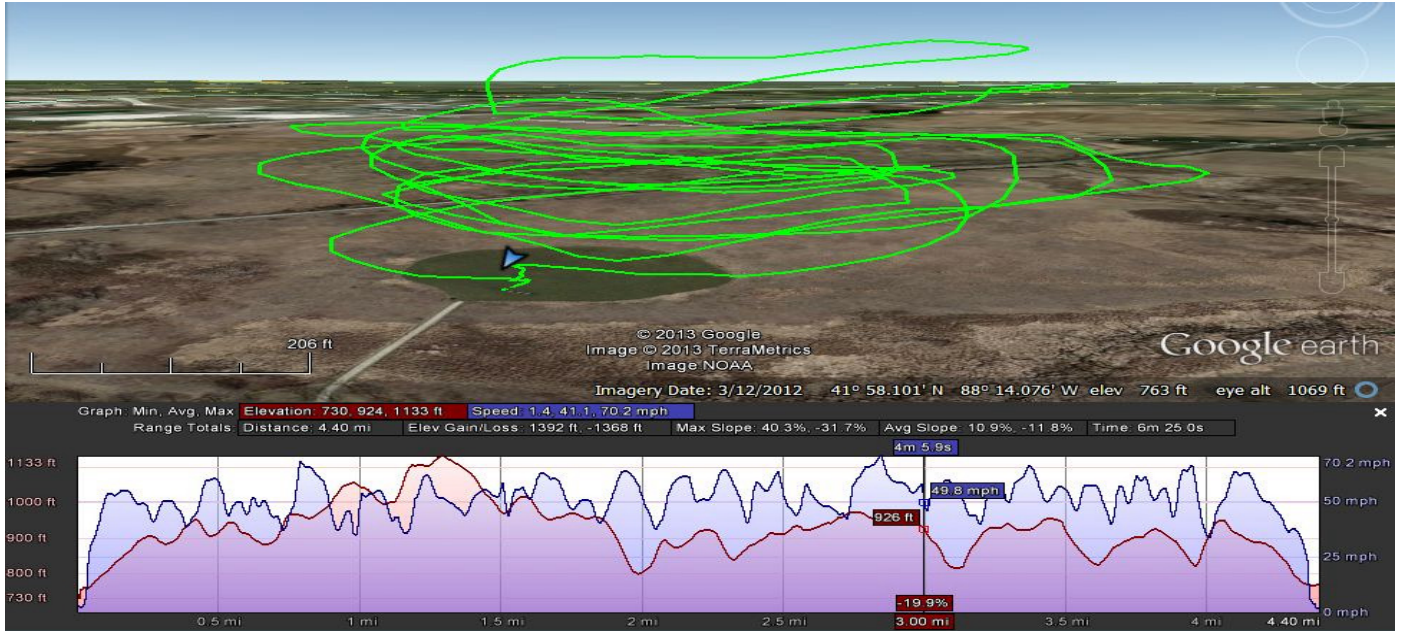
The rollover raffle was taken home by **Mike Emmons**.

GPS Flight Tracking -- Old Field & New

By Dave West

Recently, I did some experimenting with a Global Positioning System (GPS) logger and the free program **Google Earth**. Between John Howe, Leno DiDonna, Ed Wonnacott, Scott Stampfli, and myself; the logger took a ride in several different planes of different speeds and sizes.

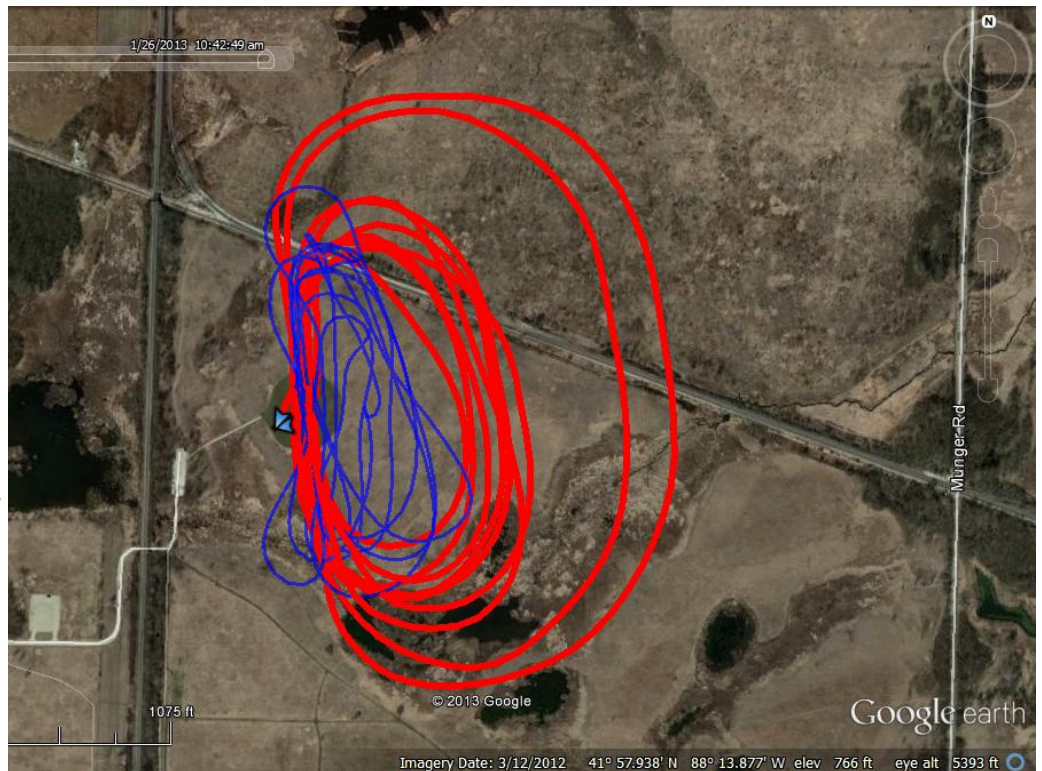
The *Google Earth* program is pretty nifty in that it allows you to overlay the GPS data onto an image of our field. You can rotate the viewing perspective and see a second-by-second track of your flight from any angle. You can also see altitude and speed information at any point in the flight. Here is an example of my 4-cell Tigerkitten with the speed and altitude charted below:



Overhead View

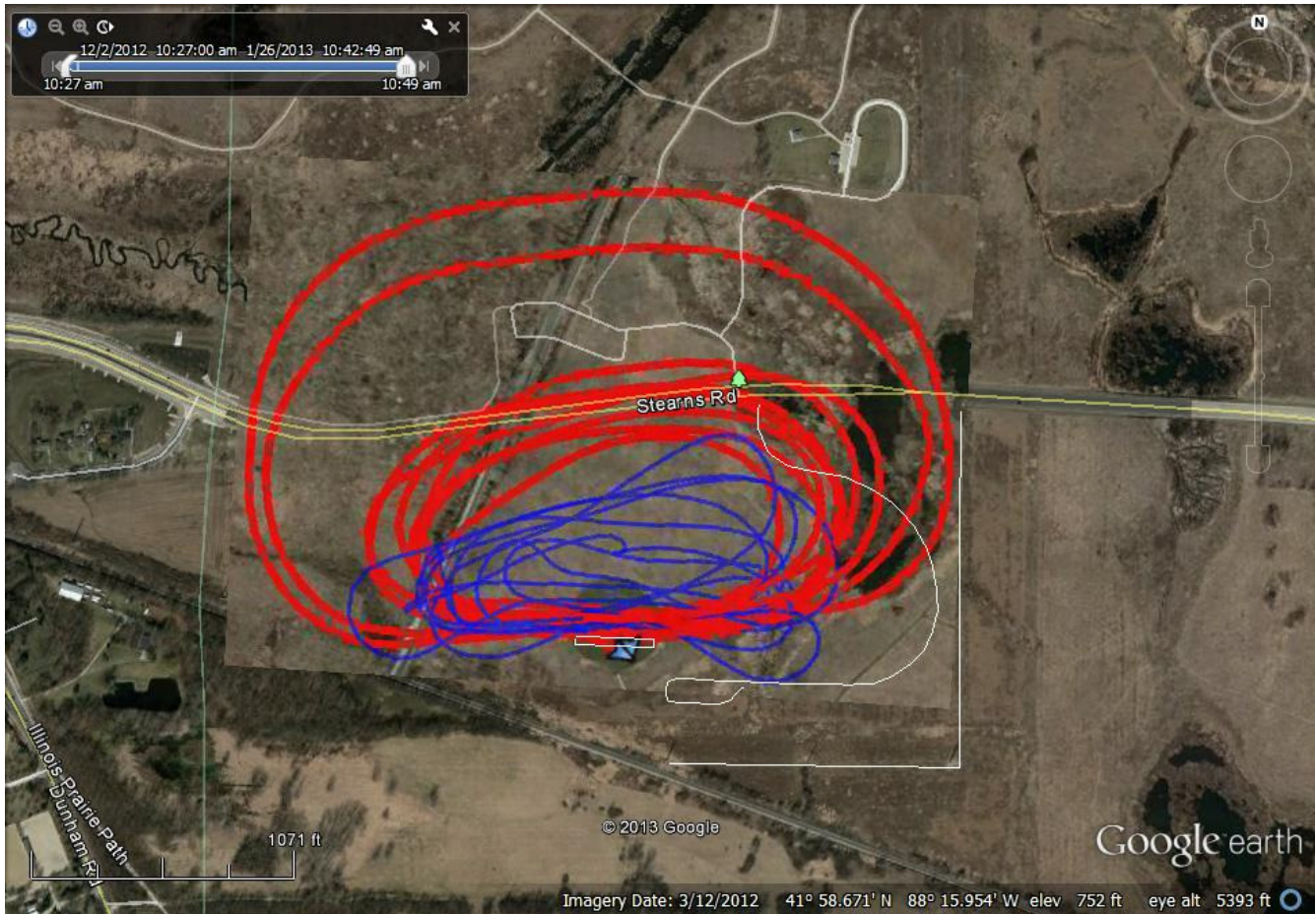
Here are two flights looking straight down at our current field. The thin blue line is from Leno's big electric and represents the path of a typical .40 to .60 sized plane. The thicker red line is from Scott's giant-scale Stick. This big red gas plane has a 80"+ wingspan and a cruising speed reaching 100 MPH (according to the GPS). Scott flew it as he normally would for most of the flight, but for the last two laps he flew it as far away as he could while still keeping it comfortably in sight.

(If you receive a B&W copy of the newsletter in the mail, you might want to view the color version from the website.)



The New Field

The *Google Earth* program lets you take a snapshot of the screen and overlay it onto any other location. Using this, we can see what these same flight paths would look like over the new field.



You can see Stearns Rd and the roads through the nature center. I added the fine white lines that represent the access road, runway, and power lines (to the east and south). Leno's flight (in blue) fits into the new boundaries as is. It looks like .60-size or smaller planes should be okay if we exercise some care.

Giant-scale planes will require more effort to stay in bounds. Scott's "normal" flight path will need to be pulled in a little to avoid over flying Stearns Rd. Note that Scott's "far away" test passes not only cross Stearns, but are well beyond the nature center. On the plus side, the field is very wide and the power lines are farther away than they seem.

We've known that we would need to adjust our flight patterns to stay within the shallower depth of the new field. These views give us an idea of just how much adjustment is needed.

How About Your Flights?

Interested in having a GPS logger for your own plane? I have ordered parts to build ten custom mini-GPS units. These plug into your receiver for power and are small and light enough to fit almost any plane. I will sell them to members at my cost (about \$45). Details at the February meeting.

Alternatively, the "Canmore GT-730FL-S GPS Tracker" is available from Amazon.com for about the same price. It is bigger and heavier, but it comes with a built-in battery so you don't need to plug it into your receiver.

Of course, if you see me at the field, I'd be happy to put a unit in your plane and record your flight for free.

The Transmitter

This newsletter is published monthly by the Suburban RC Barnstormers, Inc.

We reserve the right to edit all information forwarded to us. Permission is hereby given to reprint any article that we publish as long as proper credit is given.

Material can be submitted for publication: (1) at a meeting, (2) by mailing to Suburban RC Barnstormers, Inc., P.O. Box 524, Bloomingdale, IL 60108, (3) sending it to the email of the editor, Scott Taylor, at taylorstr@core.com

Articles must be received by the 4th Saturday of the month to be included in the following month's newsletter.

OFFICERS/BOARD OF DIRECTORS

President	Mike Maciejewski	630-513-1476	macieml@sbcglobal.net
Vice President	Steve Thill	630-208-9830	steve@thill.us
Treasurer	Bob Elsner	630-653-5345	Srcbarn@aol.com
Secretary	Scott Taylor	630-999-1372	taylorstr@core.com
Flight Instruction	John Howe	630-541-3054	lflyrc2@comcast.net
Fun Fly Chairman-Outdoor	Steve Merrill	630-251-5945	steveme@sbcglobal.net
Safety Officer	Tom Lyons	630-668-9525	gtpsl Lyons@comcast.net
Board	Dave West	630-837-6553	dwest@wingedshadow.com
Board	Ron Hilger	630-833-8111	Ronhilger@aol.com
Board	Scott Stampfli	630-440-6475	stamper022@comcast.net
Board	Jeff Peca	630-305-0018	j_pec@yahoo.com
Board	Bob Sarley	630-267-9534	bobs@commeq.com

NEWSLETTER STAFF

Web Masters [Marty Schrader](#) (630) 588-0241
Editor/Publisher [Scott Taylor](#) (630) 999-1372

Please Support The Following Hobby Shops

[Al's Hobby Shop, Inc.](#) 121 Addison, Elmhurst, IL (630) 832-4908
[HobbyTown-St Charles](#) 2061A Lincoln Highway, St. Charles, IL (630) 587-1256
[Lagrange Hobbies](#) 25 South LaGrange Rd, LaGrange, IL (708) 354-1220
[Strictly R/C](#) 7719 W Lawrence Ave., Chicago, IL (708) 456-9100
[True RC](#) <http://www.TrueRC.com> truerc@comcast.net
Adventure Hobbies 23 Huntington Lane, Wheeling, IL (847) 537-8669

Visit our web site at <http://www.suburbanrcbarnstormers.com>